

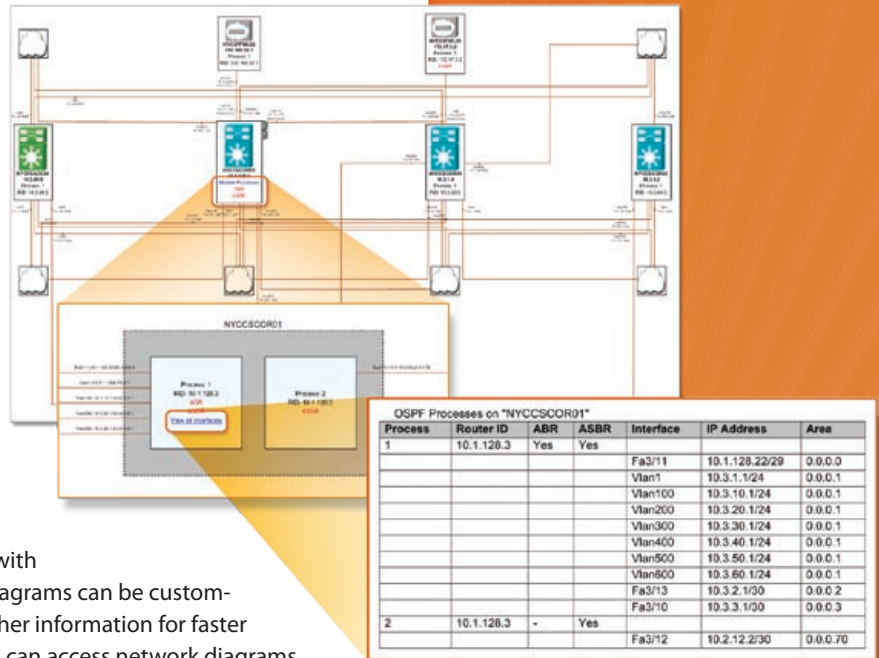
Comply with Regulatory and Security Standards

NetMapper provides standard-compliance documentation that identifies all network elements and how they can be accessed. NetMapper's accurate network documentation ensures a successful network audit and enables compliance with regulatory and security standards such as:

- PCI Data Security Standard
- SOX Section 404 Documentation Requirements
- FFIEC IT Examination Handbook
- DISA Network Infrastructure STIG

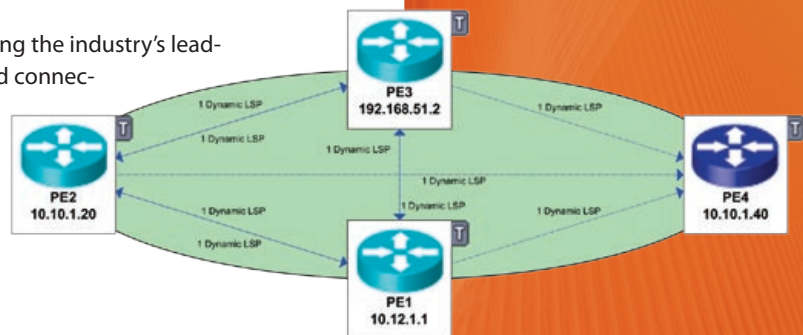
Accelerate Network Troubleshooting

NetMapper's detailed physical and logical views help pinpoint configuration and connectivity issues quickly with direct insights into configurations and routing views. Diagrams can be customized with additional administrative contact details or other information for faster troubleshooting and problem resolution. Multiple users can access network diagrams via the web, or print diagrams with customizable layouts and page formats.



Manage Changes Effectively

NetMapper applies a unique, semantic approach, combining the industry's leading auto-discovery, configuration parsing and analysis, and connectivity inference to interpret network configuration data with expert knowledge. NetMapper uses this wealth of information to provide reliable, detailed information about the network—assisting effective change management by generating up-to-date diagrams on demand to keep up with the high frequency of changes.



Reduce Operational Costs

Organizations using NetMapper obtain immediate ROI by eliminating hundreds of hours spent on manually keeping diagrams up to date. Automation of the network diagram generation process not only reduces manual effort, but also minimizes the risk of human error. NetMapper's ready-to-use templates and customizable options simplify diagram configuration with options to display tables and annotations that describe both physical and logical connectivity in addition to the network topology.

Microsoft Partner



NetMapper generates diagrams in Microsoft Visio format, the industry standard for network diagrams. OPNET is a member of Microsoft's Visio Toolbox Partner Program.

Packaging

NetMapper is offered as an optional module for OPNET's IT Sentinel®, SP Sentinel®, IT Guru® Network Planner, and SP Guru® Network Planner, to support network engineering, operations, and planning. NetMapper is also offered as a stand-alone solution.

“
 NetMapper addresses a pervasive issue that impacts network planning, engineering, and operations – network diagrams are difficult and time-consuming to maintain, and quickly become obsolete. By using NetMapper, we can dramatically improve the usability and value of network diagrams to the organization.”

Chief Technology Officer
 Fortune 1,000 Company

www.opnet.com

OPNET[®]
 Making Networks and Applications Perform[®]